

## – THE COLOURS OF OUR SURROUNDINGS DO SOMETHING TO US

Steni's new colour collection has been developed in collaboration with Kine Angelo one of Scandinavia's leading experts in colour. The colours make it easy to maintain place identities in urban areas.

Have you noticed how colours affect us? Some colours can provide us with energy, too little colour makes us under stimulated while too many make us overstimulated. It's about balance, harmony and contrasts. Colours in urban environments help to make a difference.

We need colours and contrasts to orient ourselves in our surroundings, which is especially important in relation to universal design.

Colours in architecture help to create place identities. The new colour chart emphasizes a cultural and historical character, which has been based on combinations from the Baroque to modernism.

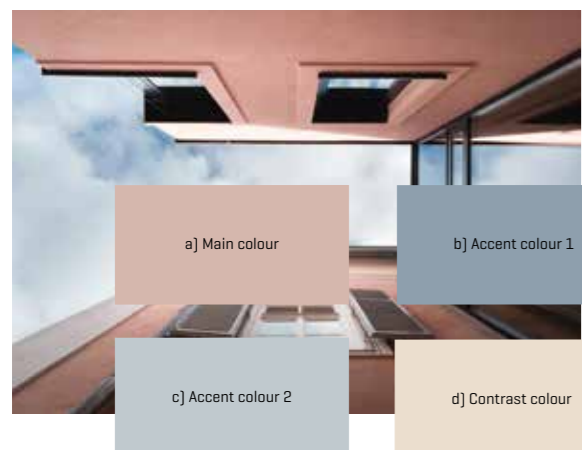
The new collection of Steni Colour consists of a total 80 colours, 60 of which make up the base colours. In the colour chart you will also find 10 accent colours and 10 on a greyscale. In addition Steni Colour panels come in different gloss levels.

On the back of this page you will see suggestions for good colour combinations for facades. Take back the colours in your architecture!



Kine Angelo, Professor, NTNU

### COLOR EXPERIENCE



Play with colour combinations! It's not just one colour that makes an impression. Together with the surroundings the combination of colours on the façade helps to create a overall picture.

Choose one main colour and one or two accent colours that work well together. Also choose a contrasting colour for details and décor that pushes the harmony slightly off balance. This provides an exciting effect to the building.

Remember that all colours look different on a façade than on screen or small swatches. These are experienced often brighter and more colourful on large surfaces, and colours in northerly light pulls in the direction of blue.

### BOOK A PROJECT MEETING

Let's plan your next project together.

T: [+47] 33 15 56 00

E: info@steni.no

steni.com



Low carbon footprint



Better overall economy



Protects and secures



Easy cleaning



Format-flexible



Freedom of choice in texture



Creative possibilities

60<sup>Y</sup>

60-year warranty



LASTING EXPRESSIONS

# NEW COLOURS FOR FACADES

Designed for the right use of colour in urban areas



## BRING BACK THE COLOUR IN YOUR ARCHITECTURE

Based on historical colours in urban areas we have created a selection of hues and shades selected to inspire and give creative expression. The colours aren't trendy or made to keep up with fashion they are timeless, honest and full of meaning.

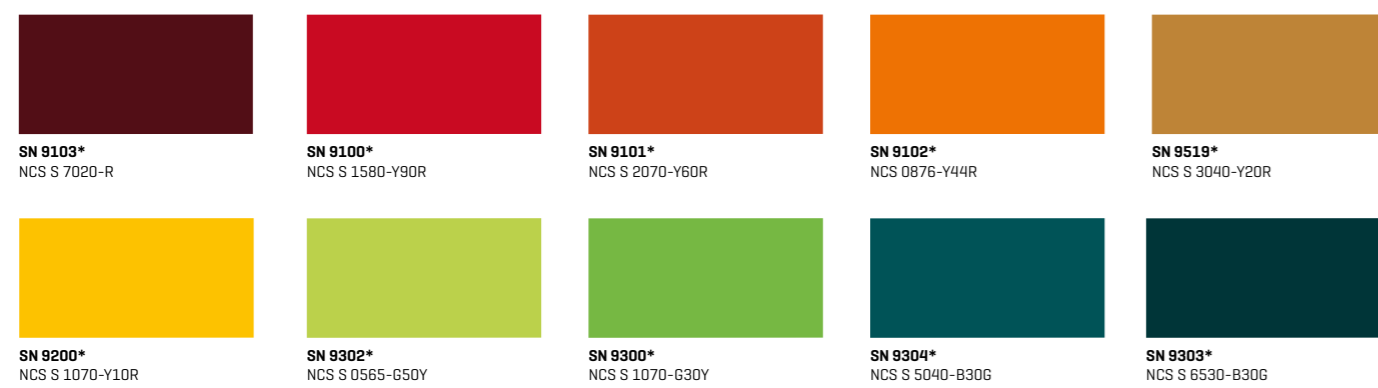


LASTING EXPRESSIONS

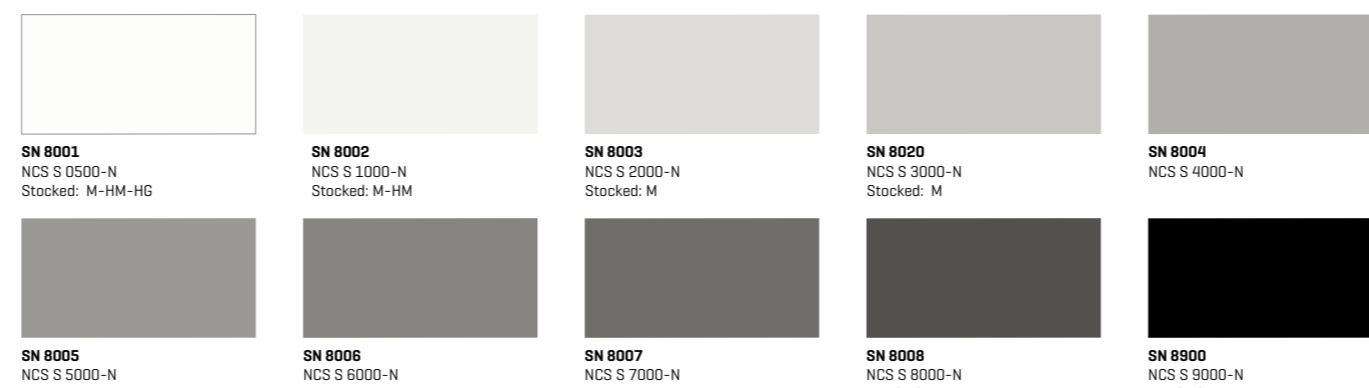
## STANDARD COLOURS STENI COLOUR



## SIGNAL COLOUR



## NEUTRAL GRAYSCALE



## COLOUR COMBINATIONS

To make it easier to find good, functional combinations, colour expert Kine Angelo set up ready-made colour combinations with weighting. See all colour combinations at [steni.no](http://steni.no).

### MAIN COLOR [a]

The main colour is used on the largest wall surfaces of the façade, and sets conditions for the other colours.

### ACCENT COLOURS 1 AND 2 [b+d]

The accent colours should emphasize the hue of the main colour in a harmonious way. It's the colours you'll find on smaller wall surfaces, building volume and façade elements in the façade.

### CONTRASTING COLOR [c]

This is the colour you want to be noticed which creates variation and excitement in the façade, whether it is colour strength or degree of lightness.

The contrasting colour should also accentuate the main colour, but is used in building details. Choose the contrasting colour from the base colours or the accent colours in the colour swatch.

a) 2010-Y10R b) 4020-Y40R c) 5020-Y80R d) 4010-Y10R



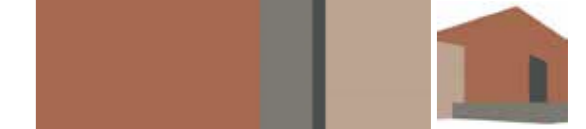
a) 5030-Y80R b) 3010-Y50R c) 7020-R d) 4020-Y20R



a) 2020-Y10R b) 1002-Y c) 5010-G30Y d) 4005-G80Y



a) 4030-Y60R b) 4502-Y c) 7502-B d) 3010-Y50R



a) 2030-Y20R b) 5010-R90B c) 1604-Y22R d) 5502-Y



a) 2503-Y80R b) 5010-Y82R c) 4030-Y60R d) 4005-Y20R



a) 3030-Y30R b) 6020-Y80R c) 7020-R d) 1505-Y30R



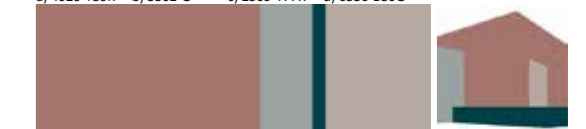
a) 3208-Y77R b) 7502-Y c) 5010-G30Y d) 6020-Y80R



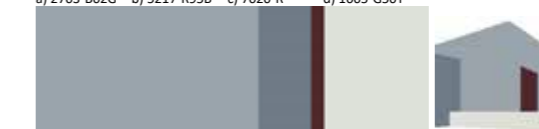
a) 3502-G b) 7502-B c) 6020-Y80R d) 4010-Y70R



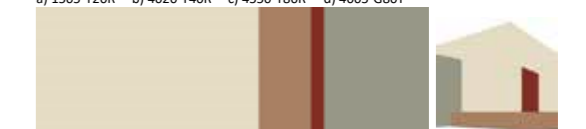
a) 4020-Y80R b) 3502-G c) 2509-Y77R d) 6530-B30G



a) 2703-B02G b) 5217-R95B c) 7020-R d) 1005-G50Y



a) 1505-Y20R b) 4020-Y40R c) 4550-Y80R d) 4005-G80Y



a) 3605-R99B b) 2005-Y20R c) 7502-B d) 4010-Y10R



a) 3010-G90Y b) 4010-G50Y c) 7502-Y d) 2005-G60Y

